

HA-CAUTI Maintenance Audit Facilitator's Guide

CAUTI Maintenance Audit Education Tool and Design

Learning Activity:

- ❖ Each participant will be given a copy of the *Foley Necessity/Maintenance/Removal Audit Tool*
- ❖ Participants will have 10 minutes to audit the three mannequins and using the audit tool note what is correct and what is incorrect
- ❖ Facilitator/Educator reviews the findings of the participant's audit (5 minutes).

Scenario set up:

- ❖ Set up 3 simulated cases with the cardboard mannequins
- ❖ Place the appropriate scenario card by the mannequin (see CAUTI Maintenance Audit tool Classroom extras 5-2014)

Contained below:

- ❖ Simulation Set-up Key and Debrief Talking Points
- ❖ Simulation Set-up Pictures
- ❖ Making the Mannequins

HA-CAUTI Maintenance Audit Guide

Simulation Set-up Key and Debrief Talking Points

Simulation Case	What is wrong in the simulation	Corrective action needed (debrief talking points)	What is right in the simulation (debrief talking points)
Simulation Case 1 <ul style="list-style-type: none"> Hospital day 4; Nursing home patient admitted for infection related to an open stage III sacral decubitus; Past history 30 year old paraplegic as a result of a motor vehicle accident 10 years ago 	<ul style="list-style-type: none"> Dependent loop No label with time and date of insertion on the drainage bag 	<ul style="list-style-type: none"> Eliminate dependent loop Determine date and time of insertion and label drainage bag. Ask – <i>What if you are unable to determine?</i> 	<ul style="list-style-type: none"> Indwelling catheter is medically indicated as necessary Securement device in place Tamper evident seal intact Drainage bag is below the level of the bladder Drainage bag is off the floor Drainage bag is less than $\frac{3}{4}$ full
Simulation Case 2 <ul style="list-style-type: none"> Post-op day 3 following right hip arthroplasty; Recovery uneventful & vs 88-20-110/70, 98.6°F, 98% O₂ sat Urine clear straw color; Patient ambulating with assistive device (walker); PCA pump pain med DC'd and on oral pain medication. 	<ul style="list-style-type: none"> Indwelling catheter is NOT medically indicated as necessary Bag on the floor Not secured 	<ul style="list-style-type: none"> Use nurse driven protocols (catheter should be removed) Secure bag so that it is not on the floor Place a catheter securement device on the patient 	<ul style="list-style-type: none"> No dependent loop Tamper evident seal intact Drainage bag is below the level of the bladder Drainage bag is less than $\frac{3}{4}$ full Label with date and time of insertion on the bag
Simulation Case 3 <ul style="list-style-type: none"> 56 year old oncology patient with bladder outlet obstruction secondary to bladder cancer. Ambulating without difficulty; vital signs normal; performs self-care Exhibiting signs of depression (voicing hopelessness, crying, profound sadness) 	<ul style="list-style-type: none"> Tamper evident seal is broken or missing Drainage bag is above the level of the bladder Drainage bag is over $\frac{3}{4}$ full 	<ul style="list-style-type: none"> Replace catheter drainage system Place drainage bag so that it is below the level of the bladder Empty drainage bag 	<ul style="list-style-type: none"> Indwelling catheter is medically indicated as necessary Securement device in place No dependent loop Drainage bag is off the floor Label with date and time of insertion on the bag

Foley Necessity/Maintenance/Removal Audit Tool

Date / / Shift Dept Performed by

Rm #	Patient Name (Last, First Initial)	Indications for Medical Necessity								Indication Documented daily	***No indication met. Foley Catheter Removed	Bundle Elements: Compliant vs. NON-Compliant									Compliant with ALL Maintenance bundle elements?	
		Urology Surgery or on Urology Services	Urinary Obstruction / Retention	Gross Hematuria / Bladder Irrigation	Immediate post- op or per-op use (24-48 hrs)	**Requires Accurate I&O	Epidural Catheter in place	Stage III or IV Decubitus	Comfort Care / Palliative Care			Tamper evidence seal intact	Securement device in place	No Dependent Loop or kinked tubing	Green Sheeting clip in place	Drainage tubing and bag below bladder	Bag / meter not touching floor	Bag less than 3/4full	Label with date & time of insertion on bag	Separate clean urine drainage container for each patient		
	Case 1																NO			No		
	Case 2									NO					NO					No		
	Case 3												NO	NO	NO	NO				No		
																				Yes / No		
																				Yes / No		
																				Yes / No		
																				Yes / No		
																				Yes / No		
																				Yes / No		
																				Yes / No		
																				Yes / No		
																				% Maintenance Bundle Compliant		%

HA-CAUTI Maintenance Audit Guide

Simulation Set-up Pictures

Simulation Case 1



Simulation Case 2



Simulation Case 3



HA-CAUTI Maintenance Audit Guide

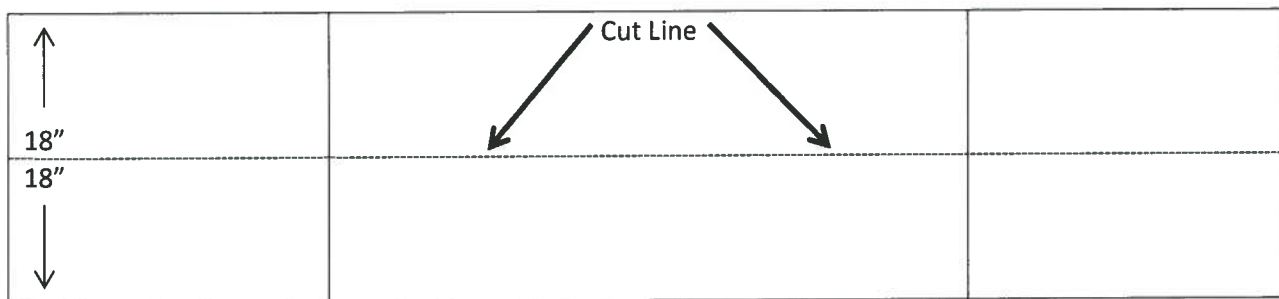
Making the mannequins

Below are suggestions and directions for making the CAUTI mannequins shown in the preceding pictures. These are simple, inexpensive and relatively easy to make.

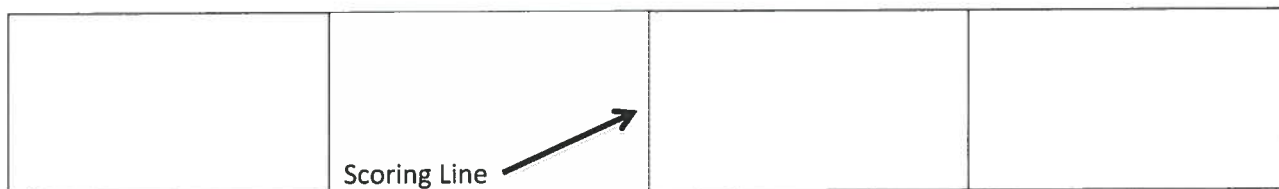
Supplies needed to make 3 mannequins:

- ✓ 2 Tri-Fold Display Boards (48"X36")
- ✓ Box cutter
- ✓ Packing tape (maybe needed for reinforcement)
- ✓ 3 hospital gowns borrowed for training
- ✓ 3 pairs of old elastic-type socks willing to give up
- ✓ Pillow stuffing (optional and if used only a small amount is needed)
- ✓ 3 paper plates
- ✓ Hot glue gun and glue
- ✓ 3 indwelling catheter kits

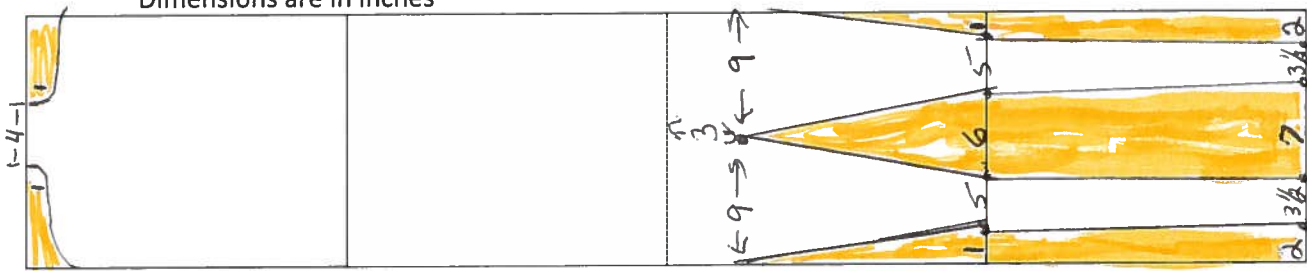
1. Cut the Tri-Fold Display Boards in half to get 2-18"X48" boards
 - a. Each 18"X48" board makes 1 mannequin.
 - b. The white side will be the posterior side of the mannequin.



2. Next make a femoral fold cut by folding one side flap over and scoring the white side of the board. Do not cut through the board.
 - a. This scoring is done so that the mannequin will be able to sit and the knees will bend appropriately.
 - b. If you do happen to cut through the display board in places, reinforce with packing tape.



3. To shape the body's form, follow the diagrams measurements below and cut out highlighted areas. Dimensions are in inches



HA-CAUTI Maintenance Audit Guide

4. The head may be made several ways:
 - a. Paper plate head – draw a face on a paper plate and glue it to a scrap of the display board that is about 4” wide and so that one end of the card board extends beyond the face’s chin several inches. Hot glue face’s neck to the white board side of the mannequin’s neck.
5. Attach the indwelling catheters, drainage bags, and securement devices on the 3 mannequins to match the simulations cases
 - a. Simulation case 1
 - i. Inflate catheter balloon half way and hot glue the catheter to the posterior side of the mannequin
 - ii. Attach the securement device to the thigh
 - iii. Make sure the tamper evident seal intact
 - iv. **DO NOT put a label with date and time of insertion on the bag**
 - b. Simulation case 2
 - i. Inflate catheter balloon half way and hot glue the catheter to the posterior side of the mannequin
 - ii. Make sure the tamper evident seal intact
 - iii. Label with date and time of insertion on the bag
 - iv. **DO NOT apply the securement device**
 - c. Simulation case 3
 - i. Inflate catheter balloon half way and hot glue the catheter to the posterior side of the mannequin
 - ii. Attach the securement device to the thigh
 - iii. Label with date and time of insertion on the bag
 - iv. **Remove the tamper evident seal**
6. To make the feet. Taking 2 scrap cuts of the display board for each mannequin,
 - a. Trace a foot and cut out.
 - b. Turn the first cut out foot over and trace on the second display board scrap to get the opposite foot.
7. Fit the cut out feet into the socks
 - a. Pillow stuffing can be used to give the foot some dimension but is optional.
8. Place the sock/foot on the mannequins appropriately for right and left foot.
9. Put a gown on each mannequin. You are done

Mannequins can be folded for easy storage.

